

Integrated coarse pre-treatment IHPES

Integrated coarse pre-treatment IHPES represents the middle size product for coarse pre-treatment designated for smaller size WWTPs. It is composed from three products integrated in one unit; grit separator and self-cleaning screen with suspended screenings press.



ISO 9001

The screen with the press are situated in an inlet channel mounted over the separator vessel. They ensure the trapping, screenings from the waste water and their dewatering by pressing.

The waste water is fed by socket into the inlet channel. The water pass through the self-cleaning screen where the screenings are captured and taken by the moving filtration belt into the press. The press is suspended on the screen hopper and so it constitutes one unit with the screen. The screenings are partially washed in the press and displaced under simultaneous dewatering into the outlet piping. The piping is directed into a container, dust bin respectively into a screw conveyor.

The water downstream from screens cleared from screenings contains heavier part of dry solids including grit. It passes through the bottom of the inlet channel to the separator vessel. There occurs the sedimentation of heavier fractions of dry solids, especially grit. On the bottom of the vessel is mounted by screw with shaft or shaftless screw which removes in intervals the deposits away.

The water cleared from the grit with the exception of fine particles is conducted through the overflow drain to the outlet socket. The wash water is taken into the vessel to enhancement the quality of the captured grit. The inlet of water both into the press and into the separator is in cycles by means of solenoid valves.

Technical data	
Description - Flow quantity	IHPES 10,15,20,25 l/s
Filtration bar space of screens	3 or 6 mm
Dewatering of screenings	ca 50%
Total input	1,6 ÷ 2,5 kW/400V
Solenoid valves	
1x6/4" (internal thread) + 2x3/4"	1x60 VA, 2x30 VA
Heating	3 ÷ 5 kW/230V
Wash water intervallic	3 ÷ 5 l/s, 0,3 ÷ 0,6 MPa
Total water consumption	2,5 ÷ 6 m ³ /h
Water for press	0,8 l/s in cycles (5 min/h)
Operating conditions	indoor: in a building outdoor: up to -20°C with heating
<i>Other parameter ranges need to be consulted with the manufacturer.</i>	



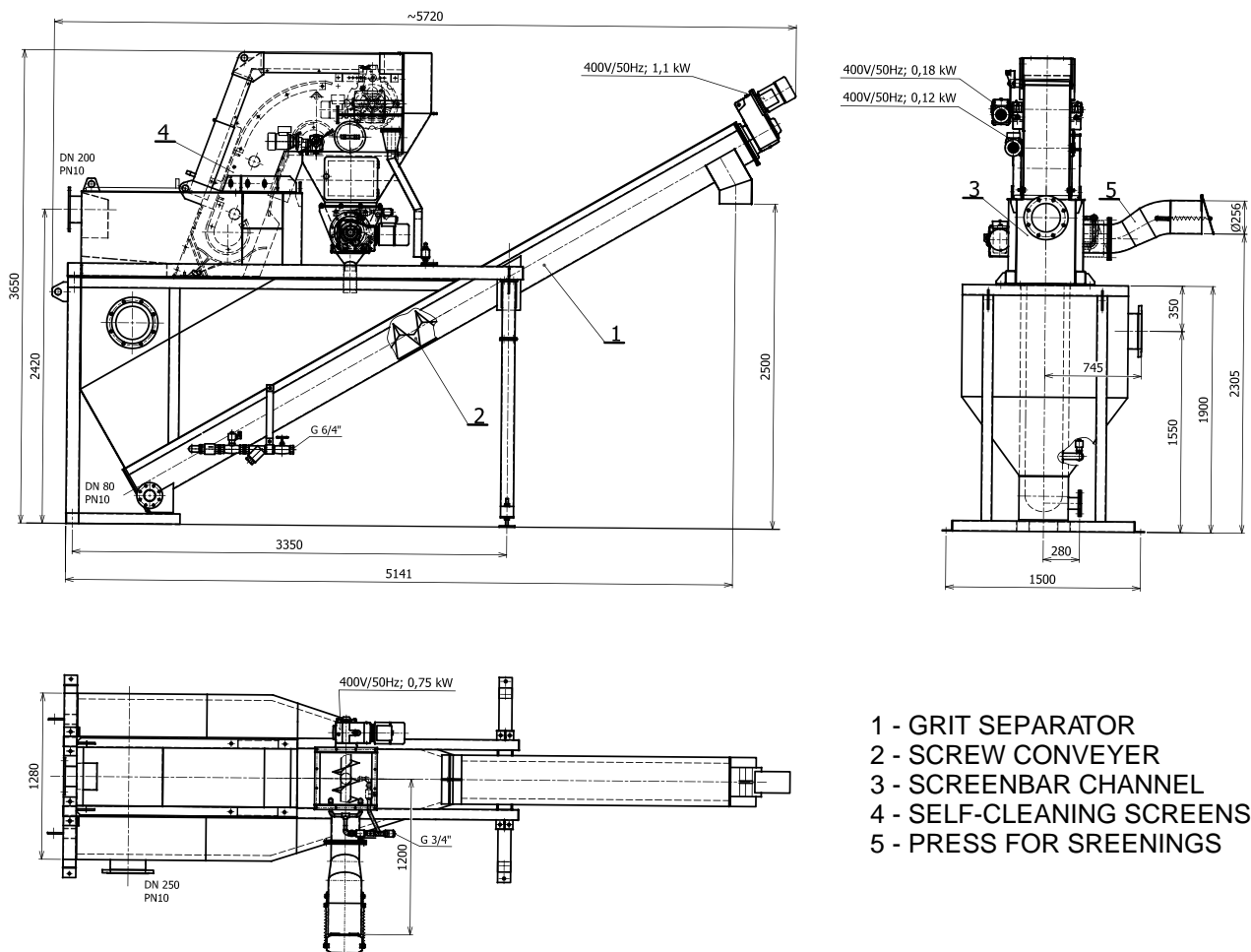
Product identification: IHPES - Q [l.s⁻¹]

For the outdoor version, the manufacturer delivers the equipment with the heating system. The whole technological process is controlled by the control panel working in the automatic mode with the possibility of the manual control of individual functions.

Material: All-stainless construction combined with plastics with a high mechanical resistance, alternatively the frame of screens from galvanized carbon steel, the shaftless screw from high-strength carbon steel. The equipment is partially protected by the outdoor paint.

During the tendering procedure will be specified the algorithm of operation resulting from the specification of the customer, notably the determination if it will be an intervallic or continuous operation.

Integrated coarse pre-treatment - example IH PES 20



- 1 - GRIT SEPARATOR
- 2 - SCREW CONVEYER
- 3 - SCREENBAR CHANNEL
- 4 - SELF-CLEANING SCREENS
- 5 - PRESS FOR SREENINGS

The manufacturer proposes the delivery including the mechanical and electrical installation. The mechanical installation does not include the inlet piping, the electrical installation includes the connection of the control panel with control elements of the equipment.

Other requirements on technical parameters can be consulted with the manufacturer during the tendering procedure. For an optimal integration in the technological part of the WWTP offers the company FONTANAR, s.r.o. consultations and technical support as a free customer service. Service within 24 (48) hours.



Fontana R, s.r.o. – P íkop 4, 602 00 BRNO, CZECH REPUBLIC

tel.: +420 545 175 853; +420 545 175 851; +420 545 175 854; tel./fax: +420 545 175 852

<http://www.fontanar.cz/>; e-mail: fontanar@fontanar.cz